

### ReadyLift® (Part# 66-5055) Strut Extension, Installation Instructions

2005-2009 Toyota Tacoma 6 lug, 2wd & 4wd

**SAFETY WARNING:** ReadyLift Suspension Inc. recommends this system be installed by a professional technician. In addition to these instructions, professional knowledge of disassembly/ reassembly procedures and post installation checks must be known.

**PRODUCT SAFETY WARNING:** Modifying your vehicle ride height may result in the vehicle handling differently than a factory equipped vehicle. Extreme care must be used to prevent loss of control or vehicle rollover. Failure to drive your modified vehicle safely may result in serious injury or death. ReadyLift Suspension Inc. does not recommend the combined use of suspension lifts, body lifts, or other lifting devices. You should never operate your modified vehicle under the influence of alcohol or drugs. Always drive your modified vehicle at reduced speeds to ensure your ability to control your vehicle under all driving conditions. Always wear your seat belt.

#### Pre-Installation Notes

1. Special literature required: OE Service Manual for model/year of vehicle. Refer to manual for proper disassembly/reassembly procedures of OE and related components.
2. Adhere to recommendations when replacement fasteners, retainers and keepers are called out in the OE manual.
3. Larger rim and tire combinations may increase leverage on suspension, steering, and related components. When selecting combinations larger than OE, consider the additional stress you could be inducing on the OE and related components.
4. Post suspension system vehicles may experience drive line vibrations. Angles may require tuning, slider on shaft may require replacement, shafts may need to be lengthened or trued, and U-joints may need to be replaced.
5. Secure and properly block vehicle prior to installation of ReadyLift Suspension Inc. components. **Always wear safety glasses** when using power tools.
6. If installation is to be performed without a hoist, ReadyLift aSuspension Inc. recommends rear alterations first.
7. Due to payload options and initial ride height variances, the amount of lift is a base figure. Final ride height dimensions may vary in accordance to original vehicle attitude. Always measure the attitude prior to beginning installation.

#### POST-INSTALLATION WARNINGS

1. Check all fasteners for proper torque. Check to ensure for adequate clearance between all rotating, mobile, fixed, and heated members. Verify clearance between exhaust and brake lines, fuel lines, fuel tank, floor boards and wiring harness. Check steering gear for clearance. Test and inspect brake system.
2. Perform steering sweep to ensure front brake hoses have adequate slack and do not contact any rotating, mobile or heated members. Inspect rear brake hoses at full extension for adequate slack. Failure to perform hose check/ replacement may result in component failure. Longer replacement hoses, if needed can be purchased from a local parts supplier.
3. Headlight adjustment is highly recommended.
4. Re-torque all fasteners after 500 miles. Always inspect fasteners and components during routine servicing.

ReadyLift Suspension Inc.

3201 W. MacArthur Blvd., Santa Ana, CA 92704

Toll Free (888) 922-2294 Local (714) 862-2968 Fax (714) 862-2972

7/21/2008

# READYLIFT®

LEVELING SUSPENSION

## ReadyLift® (Part# 66-5055) Strut Extension, Installation Instructions

2005-2009 Toyota Tacoma 6 lug, 2wd & 4wd

Please read instructions thoroughly and completely before beginning installation.  
Check [www.readylift.com](http://www.readylift.com) for any updated installation instructions.  
Installation by a trained mechanic is recommended.

Prior to lifting the vehicle, that you measure the stock height of the vehicle so that you have a base line to check after the kit has been installed. Measuring the vehicle from the bottom of the wheel to the lip of the fender is recommended.

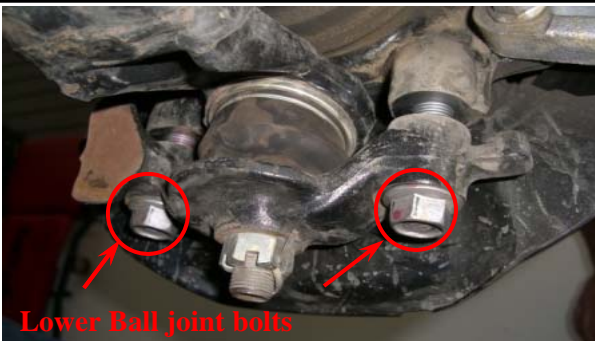


Position truck on a flat surface and lift vehicle by the frame so that the front wheels are off the ground. Use a floor jack and jack stands or a (2) two post lift if available and remove both front wheels.



1. Remove the skid plate by unbolting the four 12mm bolts that hold it on.

2. Starting from the passenger side, loosen the upper and lower strut mount nuts.



Lower Ball joint bolts



3. Loosen, but do not remove the 19mm lower control arm nut and bolt, Remove the 19mm lower ball joint bolts.

4. Remove the lower strut mount nut and bolt. Push the lower control arm down.

5. Remove the three upper strut mounting bolts.  
Remove the strut from the vehicle and mount it in a bench vise. Install the ReadyLift® kit, and torque fasteners to OEM specifications. Note the shape of the ReadyLift® spacer; the strut will be rotated 180 degrees when reinstalled.



ReadyLift Suspension Inc.

3201 W. MacArthur Blvd., Santa Ana, CA 92704

Toll Free (888) 922-2294 Local (714) 862-2968 Fax (714) 862-2972

7/21/2008

### ReadyLift® (Part# 66-5055) Strut Extension, Installation Instructions

2005-2009 Toyota Tacoma 6 lug, 2wd & 4wd

**Please read instructions thoroughly and completely before beginning installation.**

**Installation by a trained mechanic is recommended.**

6. Reinstall the strut assembly in its stock location. Leave the three upper strut mounting nuts loose. Raise the lower control arm and install the lower strut mounting bolt and nut. Use a floor jack to raise the lower control arm up in order to get the lower ball joint bolts installed. Be sure to use a thread locker on the lower ball joint bolts. Be sure to tighten all nut and bolts to factory specs.

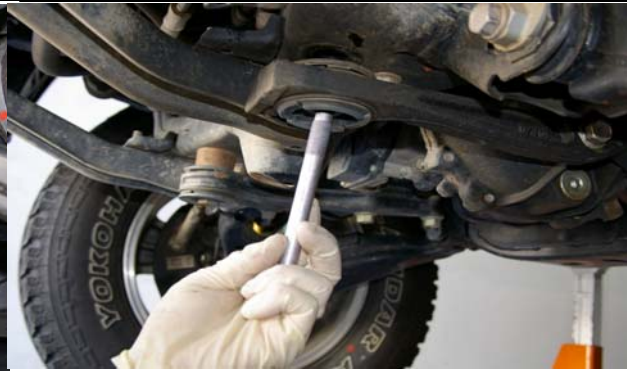


7. Repeat steps 2 through 7 on the Driver's Side of the vehicle. Follow each step closely, making sure to double-check the torque on all fasteners.

### Differential Drop Installation



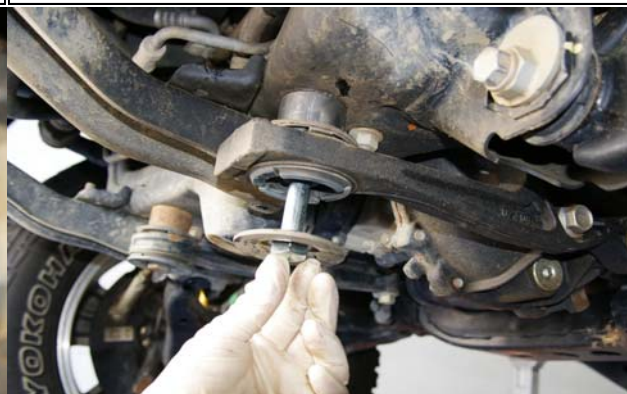
1. Position a floor jack under the front differential. Raise the pad so that it is touching the diff.



2. Remove the factory 19mm differential mounting nuts and bolts. The OEM washers will be reused.



3. Install the 1" spacers between the differential supports and the front cross-member. Install the new bolts with factory washers and the new nuts and washers. Torque to factory specs.



4. Re-install the skid-plate, use two OEM bolts for the front and the supplied and torque the bolts to factory specs. Re-install the wheels and torque to factory specs.

ReadyLift Suspension Inc.

3201 W. MacArthur Blvd., Santa Ana, CA 92704

Toll Free (888) 922-2294 Local (714) 862-2968 Fax (714) 862-2972

7/21/2008

### ReadyLift® (Part# 66-5055) Strut Extension, Installation Instructions

2005-2009 Toyota Tacoma 6 lug, 2wd & 4wd

Please read instructions thoroughly and completely before beginning installation.

#### SKID PLATE SPACER INSTRUCTIONS



Using the hardware provided, install the M8 bolt, washer, skid plate, and 1/2 tall spacer into the back two skid plate mounting points. Use the OEM hardware for the two front mounting parts.

Wheel Alignment; a Certified Alignment Technician that is experienced with lifted vehicles is recommended to perform the alignment.

\*It is recommended that you have your vehicle's alignment checked whenever installing new tires.

\*It is also recommended that you adjust your headlights whenever your vehicle's ride height is altered.



#### **Vehicle Handling Warning**

Vehicles with larger wheels and tires will handle differently than stock vehicles. Take time to familiarize yourself with the handling of your vehicle. **DRIVE SAFELY and WEAR YOUR SEATBELT.**

#### **Installation Warning**

Always wear proper safety equipment and use the correct tools when installing any suspension upgrade. Make sure vehicle is on a flat surface and you are using jack stands or a lift rated for the weight of the vehicle.

**Warning!** This ReadyLift® Leveling Kit is designed and engineered to level out a stock vehicle with no prior modifications. The use of this kit along with items such as rear lift blocks or spacers, add-a-leaves, airbags, suspension lifts, body lifts or any other type of lifting accessory shall be done at the vehicle owners risk and will void any and all warranties in effect or implied by ReadyLift®.

ReadyLift Suspension Inc.

3201 W. MacArthur Blvd., Santa Ana, CA 92704

Toll Free (888) 922-2294 Local (714) 862-2968 Fax (714) 862-2972

7/21/2008