



LEVELING SUSPENSION

ReadyLift® (Part# 69-2515TP & 69-2516TP) Lift Kit, Installation Instructions

2005-2009 Ford F-350 Super Duty 4WD

SAFETY WARNING: ReadyLift Suspension Inc. recommends this system be installed by a professional technician. In addition to these instructions, professional knowledge of disassembly/ reassembly procedures and post installation checks must be known.

PRODUCT SAFETY WARNING: Modifying your vehicle ride height may result in the vehicle handling differently than a factory equipped vehicle. Extreme care must be used to prevent loss of control or vehicle rollover. Failure to drive your modified vehicle safely may result in serious injury or death. ReadyLift Suspension Inc. does not recommend the combined use of suspension lifts, body lifts, or other lifting devices. You should never operate your modified vehicle under the influence of alcohol or drugs. Always drive your modified vehicle at reduced speeds to ensure your ability to control your vehicle under all driving conditions. Always wear your seat belt.

Pre-Installation Notes

1. Special literature required: OE Service Manual for model/year of vehicle. Refer to manual for proper disassembly/reassembly procedures of OE and related components.
2. Adhere to recommendations when replacement fasteners, retainers and keepers are called out in the OE manual.
3. Larger rim and tire combinations may increase leverage on suspension, steering, and related components. When selecting combinations larger than OE, consider the additional stress you could be inducing on the OE and related components.
4. Post suspension system vehicles may experience drive line vibrations. Angles may require tuning, slider on shaft may require replacement, shafts may need to be lengthened or trued, and U-joints may need to be replaced.
5. Secure and properly block vehicle prior to installation of ReadyLift Suspension Inc. components. **Always wear safety glasses** when using power tools.
6. If installation is to be performed without a hoist, ReadyLift aSuspension Inc. recommends rear alterations first.
7. Due to payload options and initial ride height variances, the amount of lift is a base figure. Final ride height dimensions may vary in accordance to original vehicle attitude. Always measure the attitude prior to beginning installation.

POST-INSTALLATION WARNINGS

1. Check all fasteners for proper torque. Check to ensure for adequate clearance between all rotating, mobile, fixed, and heated members. Verify clearance between exhaust and brake lines, fuel lines, fuel tank, floor boards and wiring harness. Check steering gear for clearance. Test and inspect brake system.
2. Perform steering sweep to ensure front brake hoses have adequate slack and do not contact any rotating, mobile or heated members. Inspect rear brake hoses at full extension for adequate slack. Failure to perform hose check/ replacement may result in component failure. Longer replacement hoses, if needed can be purchased from a local parts supplier.
3. Headlight adjustment is highly recommended.
4. Re-torque all fasteners after 500 miles. Always inspect fasteners and components during routine servicing.

ReadyLift Suspension, Inc

3201 W MacArthur Blvd, Santa Ana, CA, 92704

Toll Free (888) 922-2294 Local (714) 862-2968 Fax (714) 862-2972

7/22/2008

READYLIFT®

LEVELING SUSPENSION

ReadyLift® (Part# 69-2515TP & 69-2516TP) Lift Kit, Installation Instructions

2005-2009 Ford F-350 Super Duty 4WD

Please read instructions thoroughly and completely before beginning installation.

Check www.readylift.com for any updated installation instructions.

Bolt Size Millimeters	Torque Specs in FT/LB	
	Metric Grade 8.8	Metric Grade 10.9
6mm	6	8
8mm	16	22
10mm	40	45
12mm	54	70
14mm	89	117
16mm	132	175
18mm	182	236



Bill of Materials

Description	Qty
Metal coil spacer	2
Polyurethane sound insulator	2
Shock extension bracket	2
M14 x 90mm bolt	2
M14 Washer	4
M14 Nylon lock nut	2
16mm carrier bearing spacer	1
7/16x2 1/4 bolt	2
Bump stop extension bracket	2
M8x1.25 Nylon lock nut	1
05-07 F350 Pan hard bracket (69-2515 only)	1
08-09 F350 Pan hard bracket (69-2516 only)	1
ReadyLift® OEM Style 5" block Driver side	2
ReadyLift® OEM Style 5" block Passenger side	2
U-bolts with hardware (M16 x 390mm x 93mm)	4
Inner Fender Liner brackets w/ hardware	2

ReadyLift Suspension, Inc

3201 W MacArthur Blvd, Santa Ana, CA, 92704

Toll Free (888) 922-2294 Local (714) 862-2968 Fax (714) 862-2972

7/22/2008

READYLIFT®

LEVELING SUSPENSION

ReadyLift® (Part# 69-2515TP & 69-2516TP) Lift Kit, Installation Instructions

2005-2009 Ford F-350 Super Duty 4WD

Please read instructions thoroughly and completely before beginning installation.

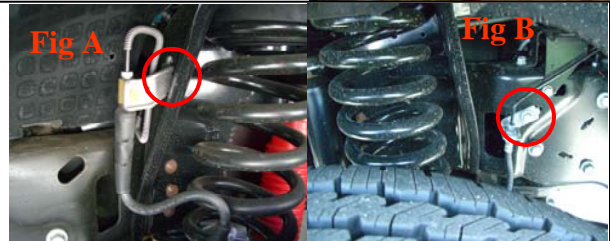
Installation by a trained mechanic is recommended.

Position truck on a flat surface and lift vehicle by the frame until the front wheels are off the ground. Using a floor jack and support the frame with jack stands, or a (2) two post lift if available. Two jacks may be needed to lift and lower the front differential during installation.

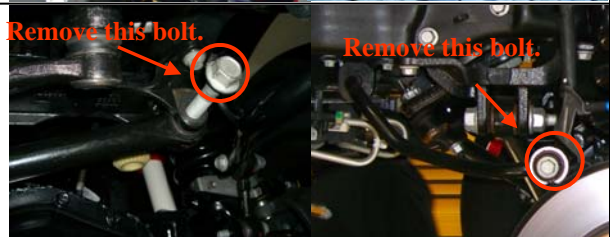
1. Remove front wheels. Remove the lower shock bolt.
You can use a jack to lift the differential and release any pressure on the lower shock bolt making the removal easier.



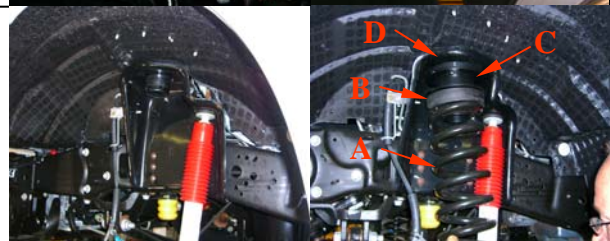
2. With the jack still supporting the axle, unbolt the 13mm brake line support bracket from the frame on both sides.
2005-2007 **Fig A**
2008 **Fig B**



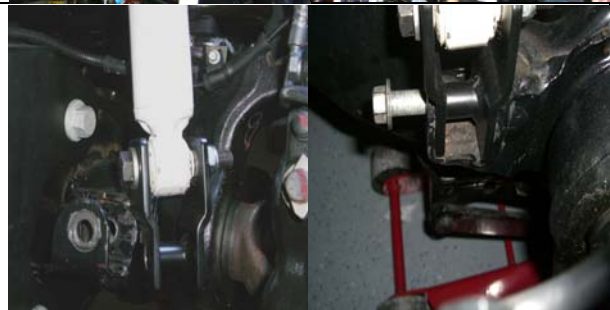
3. Remove upper track bar 30mm bolt.
Remove sway bar end link bolt on both sides. 19mm, 21



4. Lower differential and remove spring.
Install ReadyLift® coil spacer.
(Order of assembly: Coil(A), factory isolator (B), coil spacer(C), polyurethane donut(D).)
Reinstall coil and raise differential.



5. Install shock extension onto shock using the hardware provided. **Please note that there is a driver and passenger side shock extension. Look for the D and P stamped on the inside leg of the brackets.** Install shock extension bracket into factory shock mounting location on the axle using the factory hardware. Torque to factory specs.



ReadyLift Suspension, Inc

3201 W MacArthur Blvd, Santa Ana, CA, 92704

Toll Free (888) 922-2294 Local (714) 862-2968 Fax (714) 862-2972

7/22/2008

READYLIFT®

LEVELING SUSPENSION

ReadyLift® (Part# 69-2515TP & 69-2516TP) Lift Kit, Installation Instructions

2005-2009 Ford F-350 Super Duty 4WD

Please read instructions thoroughly and completely before beginning installation.

Installation by a trained mechanic is recommended.

6. Remove the two 19mm bolts on the factory track bar bracket (one on each side of the track bar mount).
Remove the three 21mm nuts located on the cross member.
Remove track bar bracket. Install ReadyLift® track bar bracket using the factory hardware.



7. Using factory hardware re-install track bar onto the new ReadyLift® track bar bracket.

Re-install sway bar end links.

Torque to factory specs.



8. Remove OEM front bump stops.

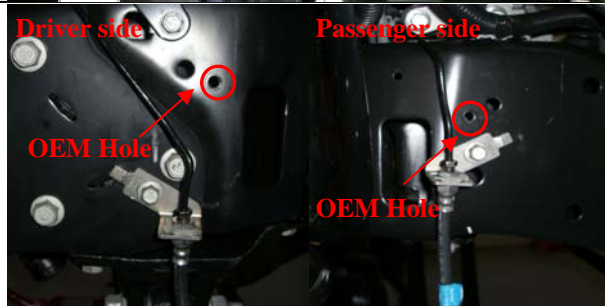
Remove the 10mm bolts that attach the bump stop brackets to the frame.

Install ReadyLift® bump stop extension bracket. Use a Phillips screw driver to tighten.

Install OEM bump stop bracket using nut provided. Install OEM bump stop.



9. **2005-2007 Models** - Reinstall brake line support brackets.
2008 models drill 3/8" hole approximately 2" below the factory hole, use the factory self-tapping screw to re-attach the brake line support bracket.



ReadyLift Suspension, Inc

3201 W MacArthur Blvd, Santa Ana, CA, 92704

Toll Free (888) 922-2294 Local (714) 862-2968 Fax (714) 862-2972

7/22/2008

READYLIFT®

LEVELING SUSPENSION

ReadyLift® (Part# 69-2515TP & 69-2516TP) Lift Kit, Installation Instructions

2005-2009 Ford F-350 Super Duty 4WD

Please read instructions thoroughly and completely before beginning installation.
Installation by a trained mechanic is recommended.

10. Remove the two 15mm bolts, use a jack stand to support the drive shaft.

Install the ReadyLift® carrier bearing spacer using the hardware provided.

Torque to factory specifications.



Be sure to double check that all hardware has been tightened and torqued to factory specs.
Remount wheels and tires and torque to factory specs. Re-torque wheels after 25 miles.

*See next page for Tire and Wheel fitment specifications.

Wheel Alignment; a Certified Alignment Technician that is experienced with lifted vehicles is recommended to perform the alignment.

*It is recommended that you have your vehicle's alignment checked whenever installing new tires.

*It is also recommended that you adjust your headlights whenever your vehicle's ride height is altered.

Vehicle Handling Warning

Vehicles with larger wheels and tires will handle differently than stock vehicles. Take time to familiarize yourself with the handling of your vehicle. **DRIVE SAFELY and WEAR YOUR SEAT-BELT.**



Installation Warning

Always wear proper safety equipment and use the correct tools when installing any suspension upgrade. Make sure vehicle is on a flat surface and you are using jack stands or a lift rated for the weight of the vehicle.

Warning! This ReadyLift® Leveling Kit is designed and engineered to level out a stock vehicle with no prior modifications. The use of this kit along with items such as suspension lifts, body lifts or any other type of lifting accessory shall be done at the vehicles owners risk and will void any and all warranties in effect or implied by ReadyLift®. This kit is not for off road abuse.

ReadyLift Suspension, Inc

3201 W MacArthur Blvd, Santa Ana, CA, 92704

Toll Free (888) 922-2294 Local (714) 862-2968 Fax (714) 862-2972

7/22/2008

READYLIFT®

LEVELING SUSPENSION

ReadyLift® (Part# 69-2515TP & 69-2516TP) Lift Kit, Installation Instructions

2005-2009 Ford F-350 Super Duty 4WD

Please read instructions thoroughly and completely before beginning installation.

Installation by a trained mechanic is recommended.

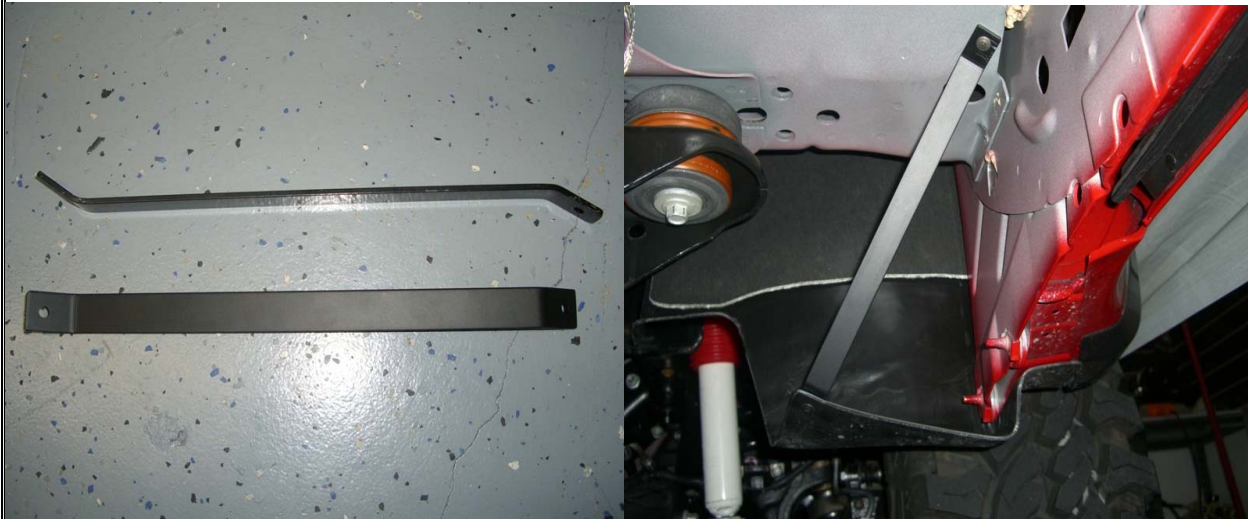
Tire and Wheel Fitment

For 35" tires: 35x12.50 Mounted on a wheel no wider than 9.5" with 0 offset or 5.25" backspacing.

For 37" tires: 37x12.50 Mounted on the factory wheel or on a wheel no wider than 8" with a +35 offset or 6" backspacing. **Please note that with this fitment the tire will rub a little at full turn on the radius arm.**

You will also need to pull the inner fender liner back with both of these fitments.

The best way to accomplish this is to install the ReadyLift® inner fender liner support kit. Drill an 1/8" hole on the inner lip of the fender liner and an 1/8" hole on the underside of the body. Using the self-tapping screw and speed clip provided attach the bracket to the fender liner then attach the other end to the body. See photos below.



Alignment Specs

Toe Left: 1/32	Toe Right 1/32
----------------	----------------

ReadyLift Suspension, Inc

3201 W MacArthur Blvd, Santa Ana, CA, 92704

Toll Free (888) 922-2294 Local (714) 862-2968 Fax (714) 862-2972

7/22/2008